

Content Indexing

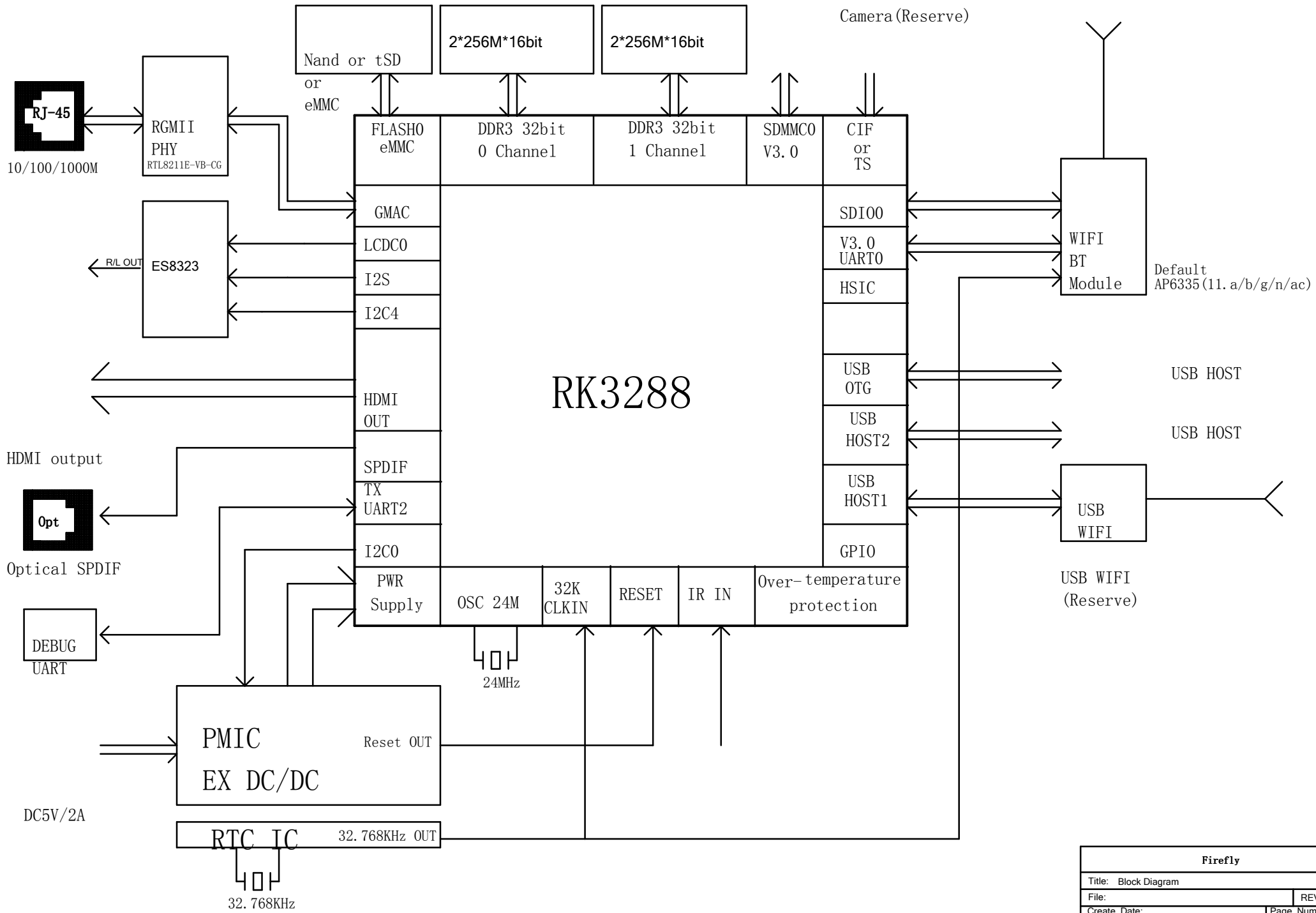
01. Index
02. Block Diagram
03. Power Tree
04. System Power
05. RK3288 USB/HSIC Controller
06. USB HOST Port
07. RK3288 RAM Controller
08. RAM-DDR3-4X16bit
09. Nand FLASH/eMMC/TF Card
10. RK3288 GPIO/POWER
11. HDMI OUT
12. RK3288 LCD/DC/IO2S Controller
13. ES8323
14. S/PDIF OUT
15. RK3288 Ethernet MAC Controller
16. 10/100/1000M-PHY
17. RK3288 SDIO0 Controller
18. AP6XXX-WIFI/BT
19. VGA
20. Camera Interface
21. DTV-(Reserve)

6 LAYERS PCB STACK

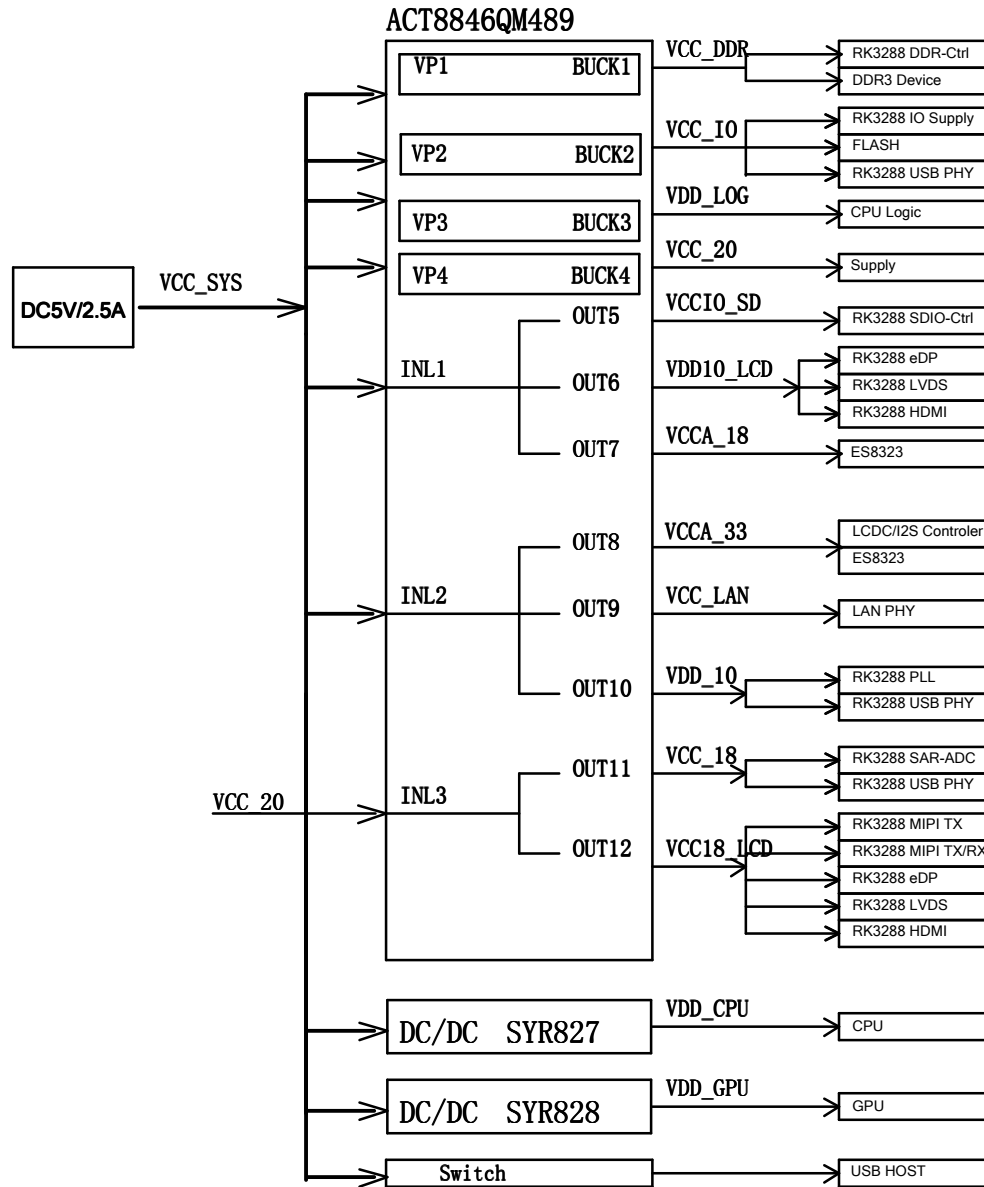
TOP (Signal1) FR4, thickness:3.8mil, Dielectric Constant:4.3 Cu, thickness:0.7mil, Plating to 1oz
GND1 FR4, thickness:8mil, Dielectric Constant:4.3 Cu, thickness:1.5mil, 1oz
POWER FR4, thickness:8mil, Dielectric Constant:4.3 Cu, thickness:1.5mil, 1oz
FR4, thickness:adjust thickness according to the thickness of board, Dielectric Constant:4.3
Signal2 FR4, thickness:8mil, Dielectric Constant:4.3 Cu, thickness:1.5mil, 1oz
GND2 FR4, thickness:3.8mil, Dielectric Constant:4.3 Cu, thickness:1.5mil, 1oz
FR4, thickness:3.8mil, Dielectric Constant:4.3 Cu, thickness:0.7mil, Plating to 1oz
BOTTOM (Signal3)

Firefly

Title: Index	
File:	REV: 1.1
Create Date:	Page Num: 1
Modify Date: Wednesday, June 18, 2014	Page Total: 21

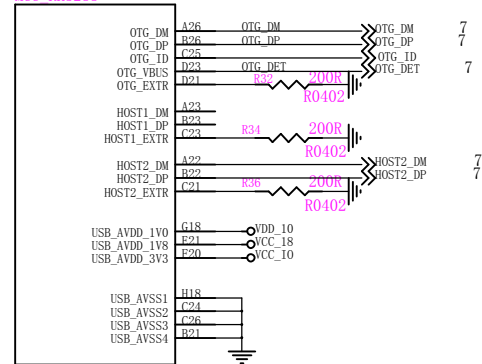


Firefly	
Title: Block Diagram	
File:	REV: 1. 1
Create Date:	Page Num: 2
Modify Date: Wednesday, June 18, 2014	Page Total: 21

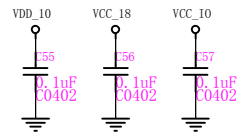
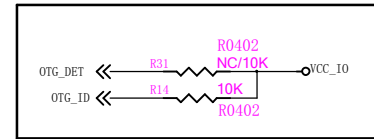


PowerName	PMIC Channel	timer(2mS)	Default	Working
VCC_20	DCDC4	Solt:0	voltage 2.0V	voltage 2.0V
VDD_10	OUT10	Solt:1	1.0V	1.0V
VCC_DDR	DCDC1	Solt:2	1.5V	1.5V (DDR3)
VDD_CPU	EX DCDC	Solt:2A	(FB=1.2V) 1.0V	DVFS
VDD_GPU	EX DCDC	Solt:2B	1.0V	DVFS
VDD_LOG	DCDC3	Solt:3	1.1V	DVFS
VCC_18	OUT11	Solt:4	1.8V	1.8V
VCC_LAN	OUT9	Solt:5	3.3V	3.3V
VCC_IO	DCDC2	Solt:6	3.3V	3.3V
VCCIO_SD	OUT5	Solt:6	3.3V	SD2.0:3.3V
VCCA_33	OUT8	OFF	OFF	SD3.0:1.8V 3.3V
VCCA_18	OUT7	OFF	OFF	1.8V
VDD10_LCD	OUT6	OFF	OFF	1.0V
VCC18_LCD	OUT12	OFF	OFF	1.8V

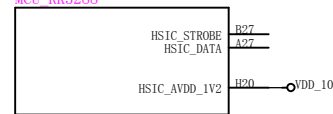
U1-E
MCU RK3288



RK3288_E

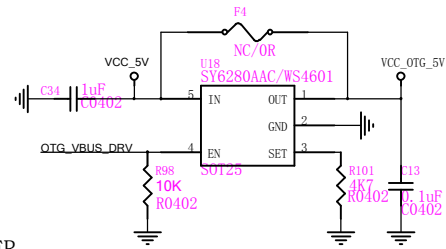
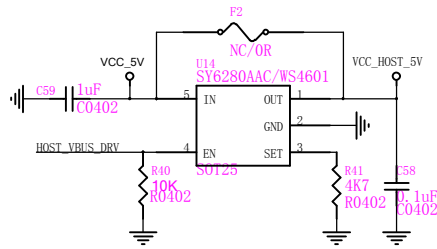
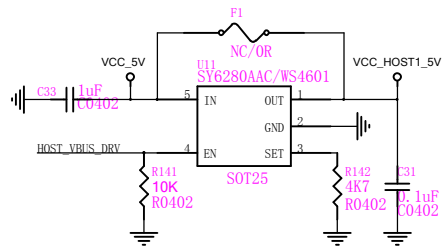
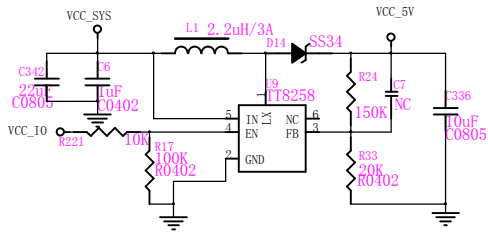


U1-U
MCU RK3288

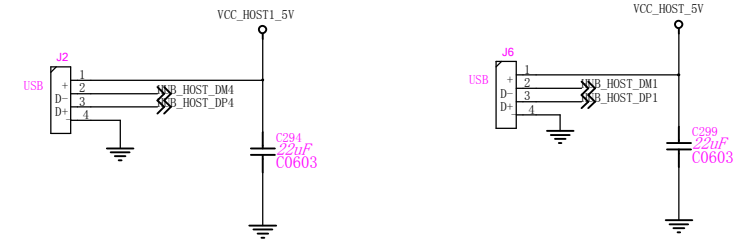
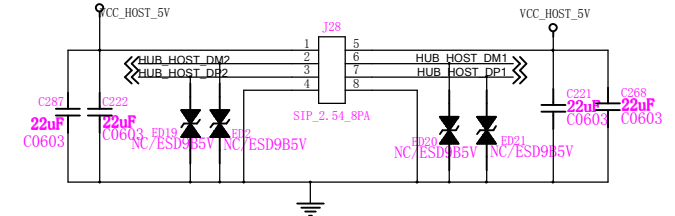
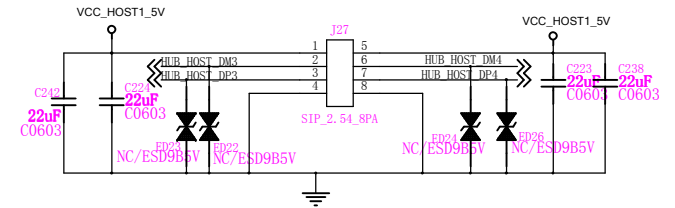


RK3288_U

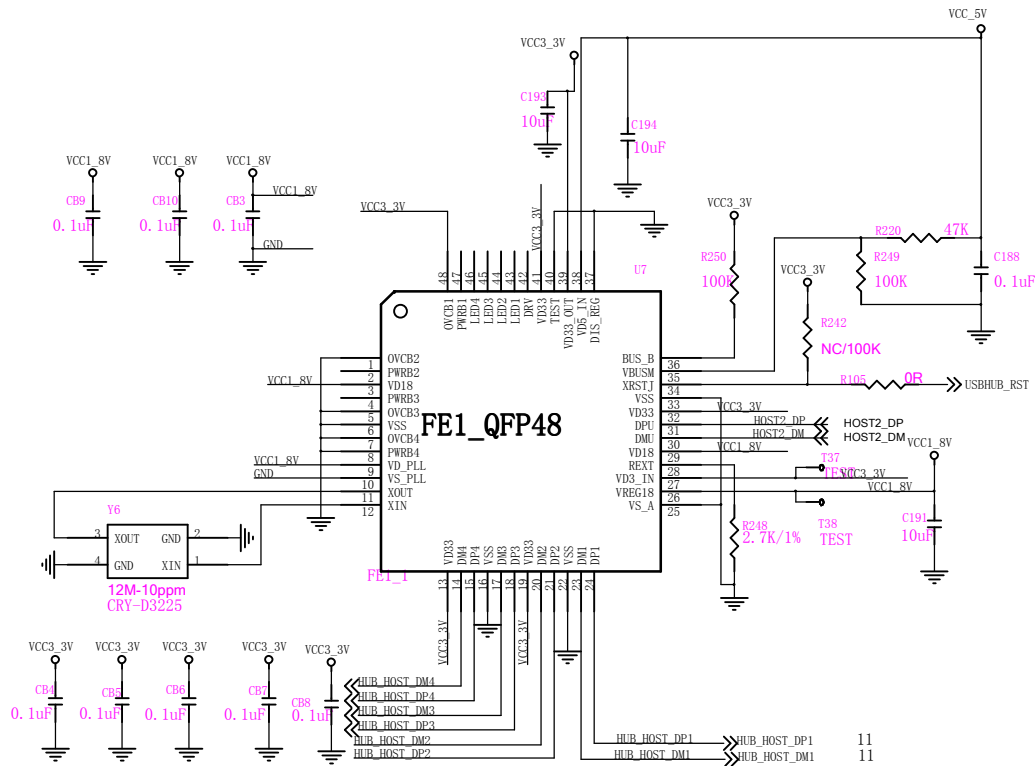
Firefly	
Title:	RK3288 USB/HSIC Controller
File:	REV: 1.1
Create Date:	Page Num: 5
Modify Date: Wednesday, June 18, 2014	Page Total: 21



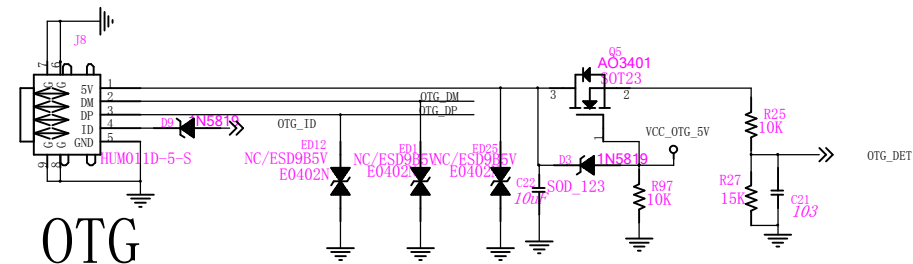
USB_POWER



HOST

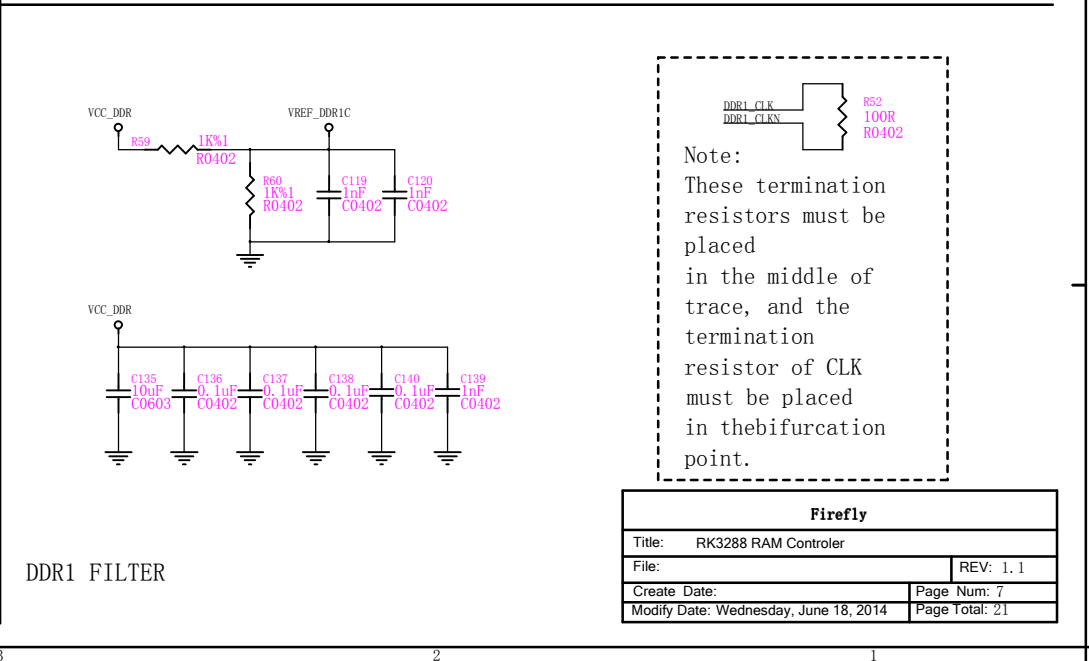
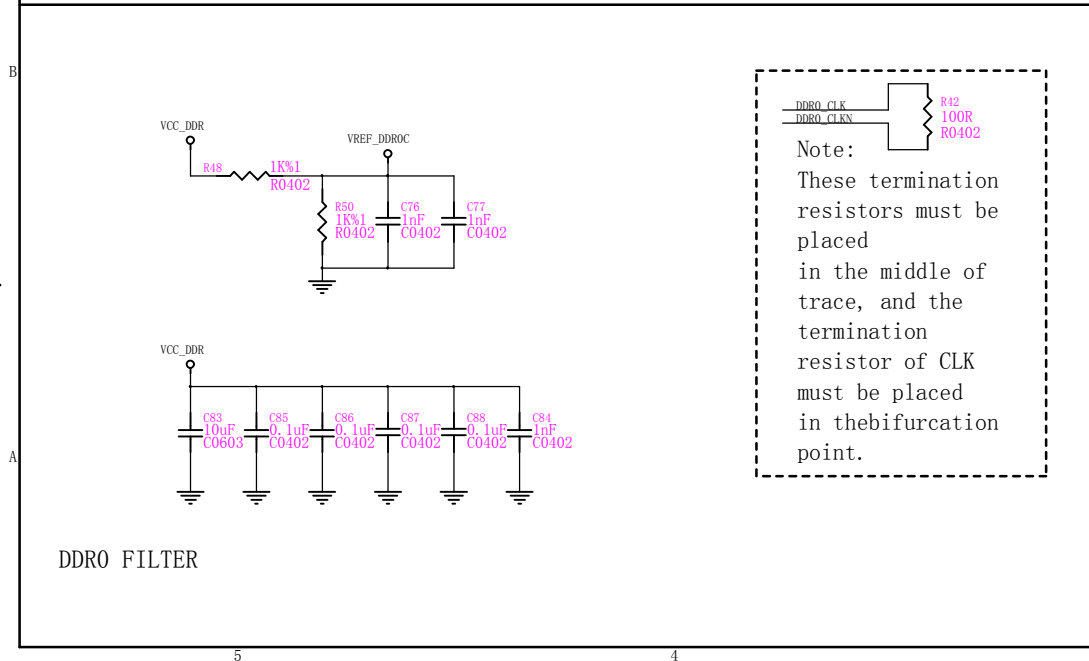
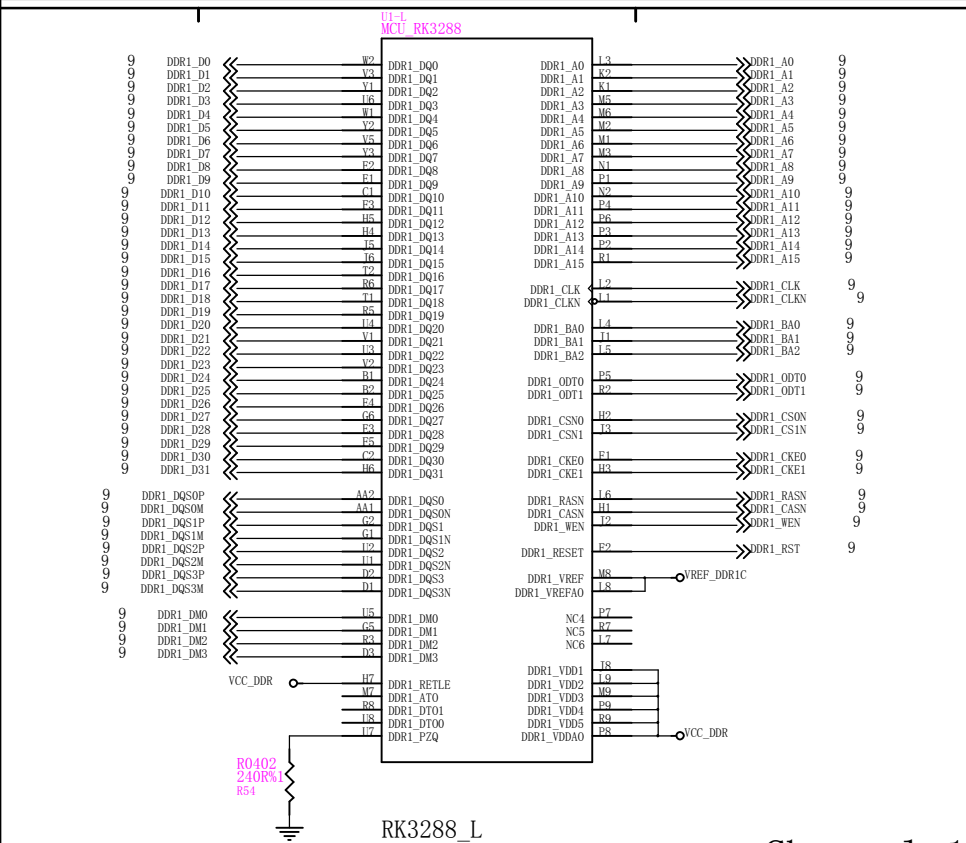
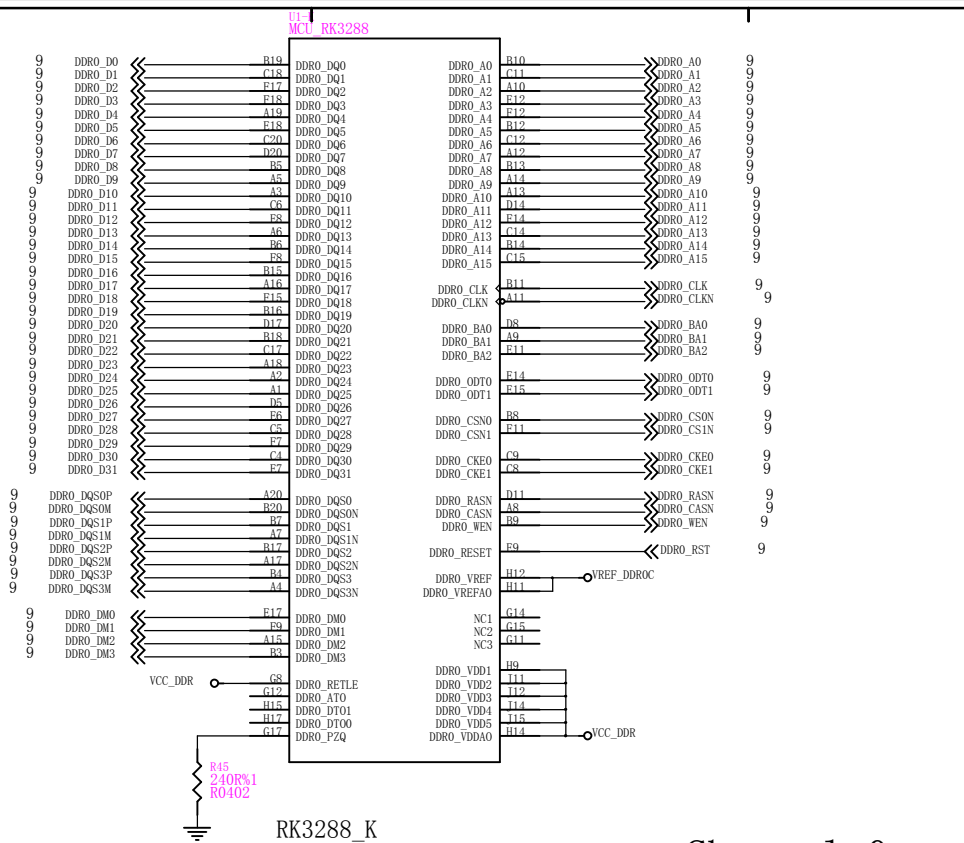


HUB CHIP



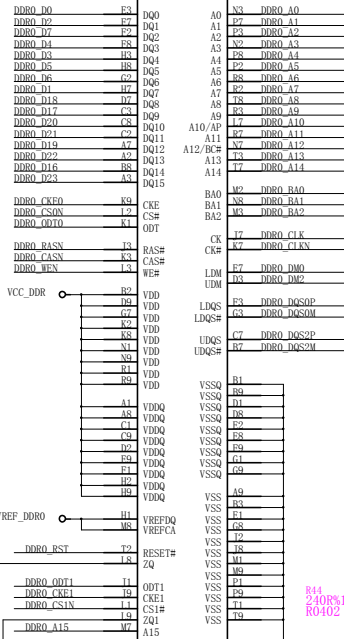
OTG

Firefly	
Title: USB HOST	
File:	REV: 1.1
Create Date:	Page Num: 6
Modify Date: Wednesday, June 18, 2014	Page Total: 21

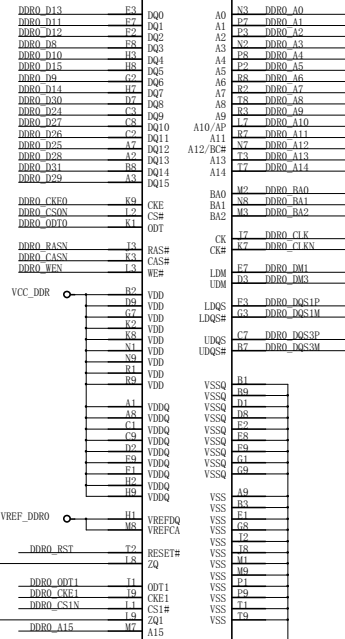


Firefly	
Title:	RK3288 RAM Controller
File:	REV: 1.1
Create Date:	Page Num: 7
Modify Date: Wednesday, June 18, 2014	Page Total: 21

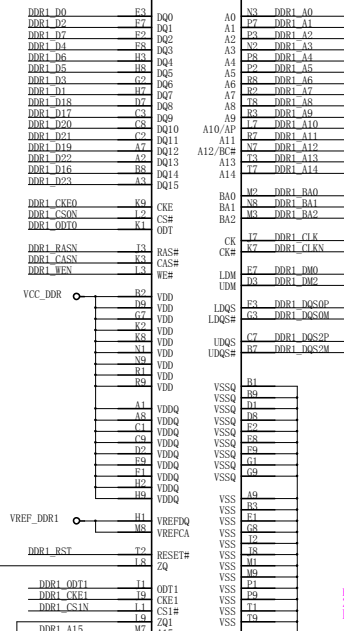
U2 DDR3 256MX16BIT



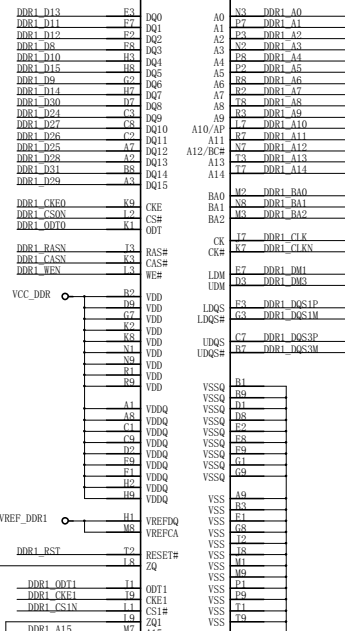
U3 DDR3 256MX16BIT



U4 DDR3 256MX16BIT

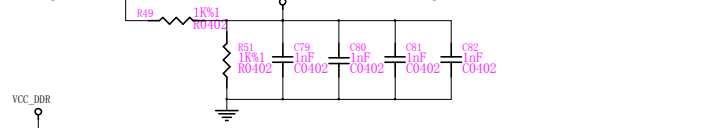


U5 DDR3 256MX16BIT

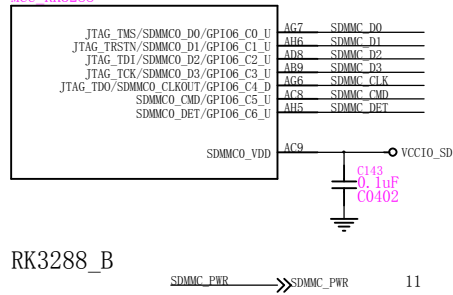


R43 240R%1 RO402

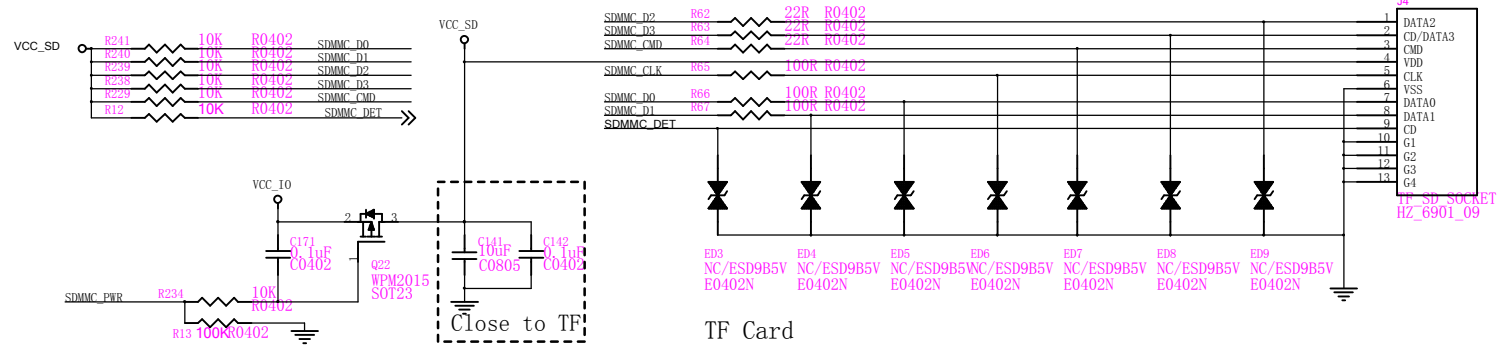
R46 NC/240R%1 RO402



U1-B
MCU RK3288

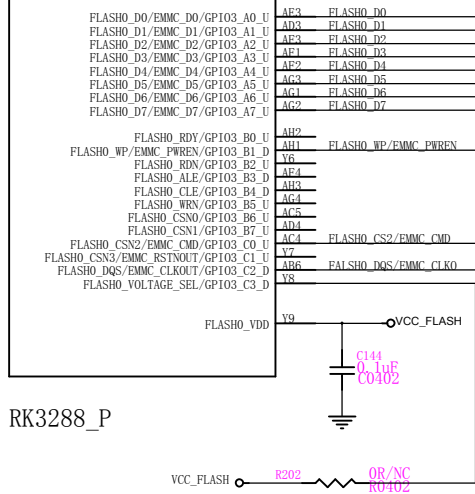


RK3288_B



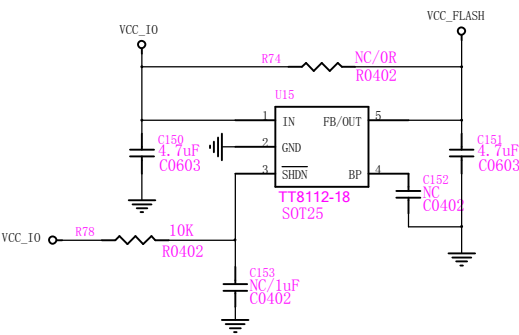
TF Card

U1-P
MCU RK3288



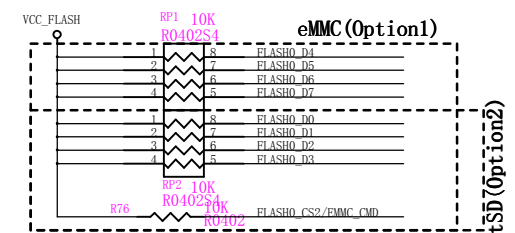
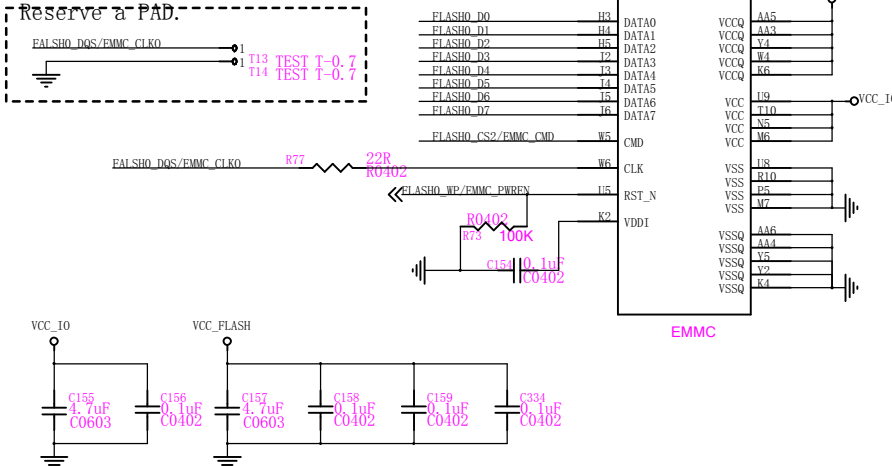
RK3288_P

Connect :1.8V
No Connect: 3.3V



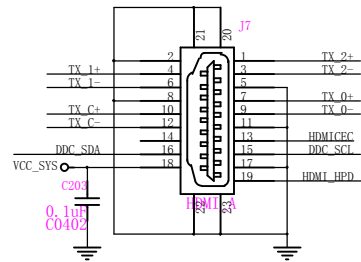
Flash Power

eMMC(default)
Note:
Reserve a PAD.

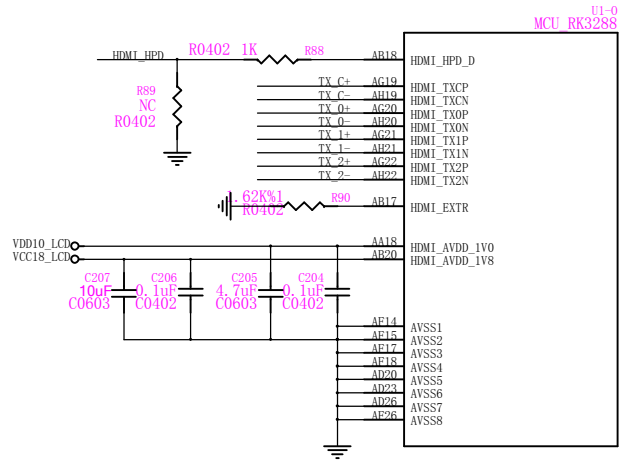
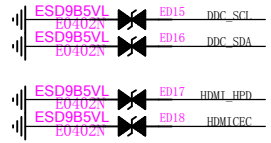
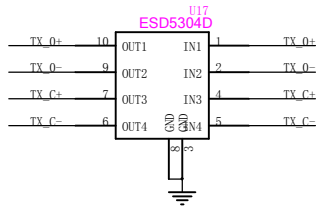
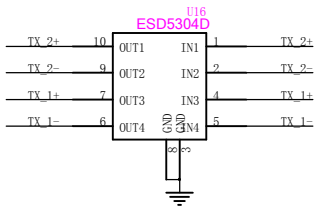


Pull-up select

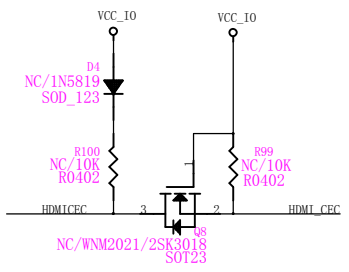
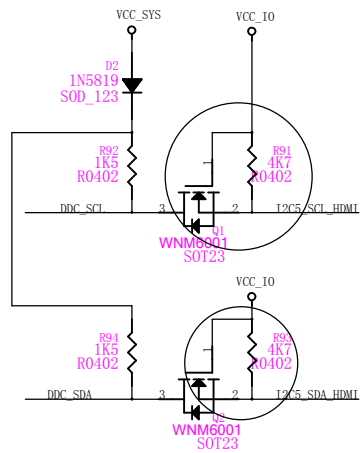
Firefly	
Title: Nand FLASH/eMMC/TF Card	REV: 1.1
File:	Page Num: 9
Create Date:	Page Total: 21
Modify Date: Wednesday, June 18, 2014	



HDMI OUT

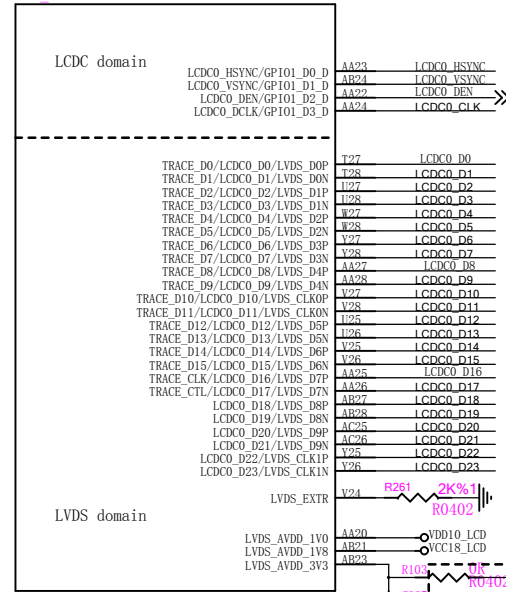


RK3288_0

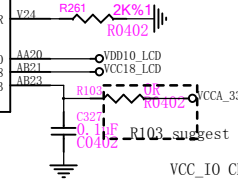


Firefly	
Title: HDMI OUT	
REV: 1.1	File:
Page Num:11	Create Date:
Page Total:21	Modify Date: Wednesday, June 18, 2014

U1-A
MCU RK3288



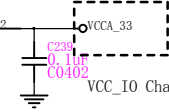
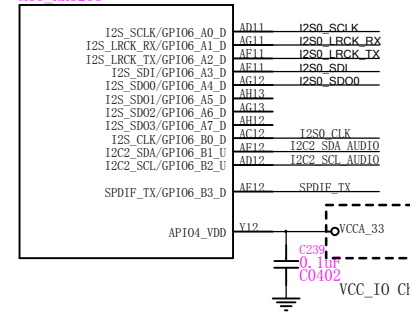
RK3288_A



VCCA_33

RK3288_I

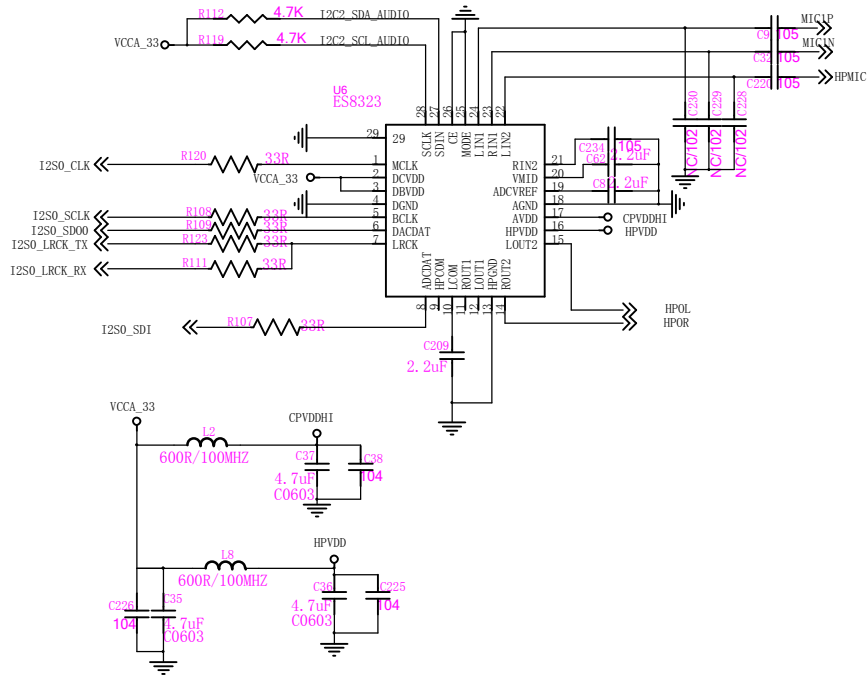
U1-I
MCU RK3288



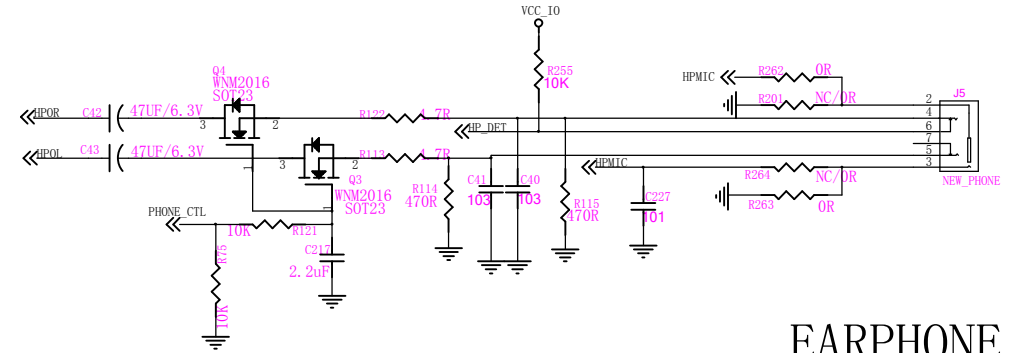
VCCA_33

VCCA_33

Firefly	
Title:	RK3288 LCDC/I2S Controler
File:	REV: 1.1
Create Date:	Page Num: 12
Modify Date: Wednesday, June 18, 2014	Page Total: 21

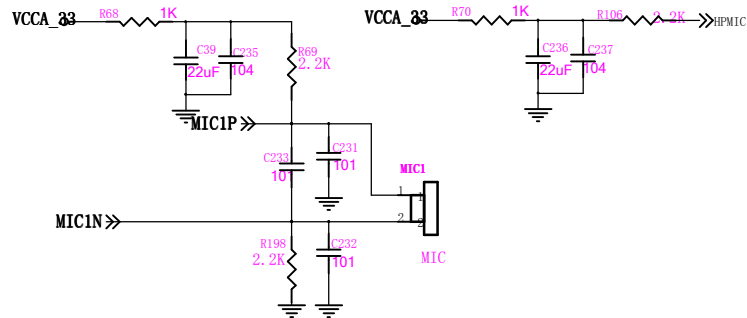


ES8323



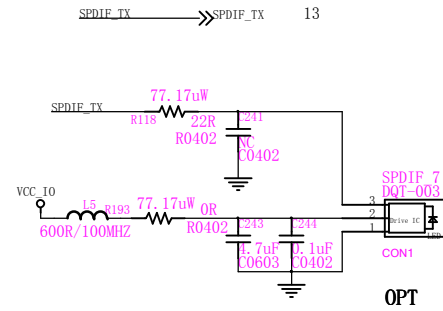
EARPHONE

If the connection to the international standard, R262 R263 don't pick up
 If the connection is millet, R201 R264 don't pick up

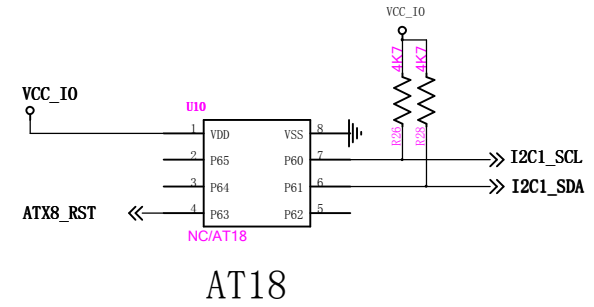


MIC

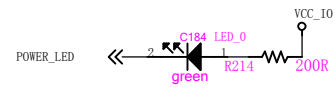
Firefly	
Title: ES8323	
File:	REV:1.1
Create Date:	Page Num:13
Modify Date:Wednesday, June 18, 2014	Page total:21



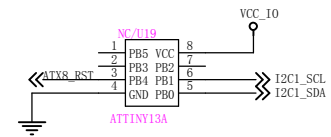
Optical S/PDIF OUT



AT18

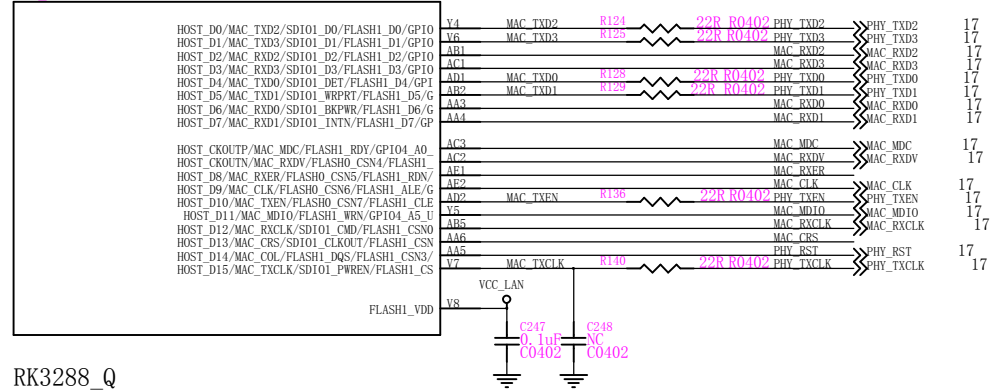


WORKING_LED

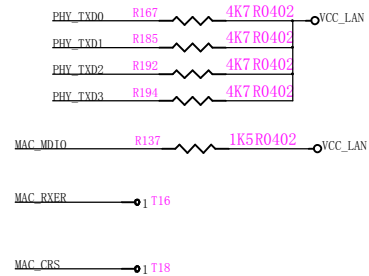


ATTINY13A

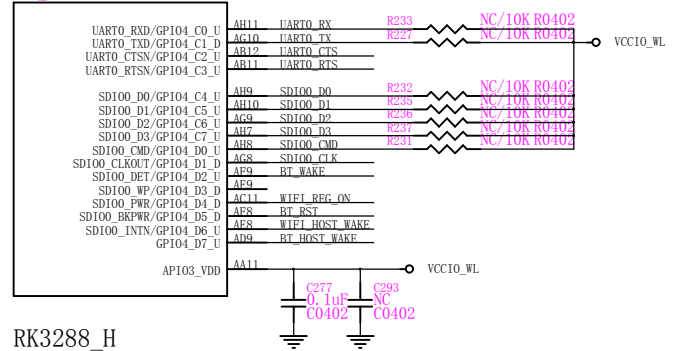
U1-Q
MCU RK3288



RK3288_Q

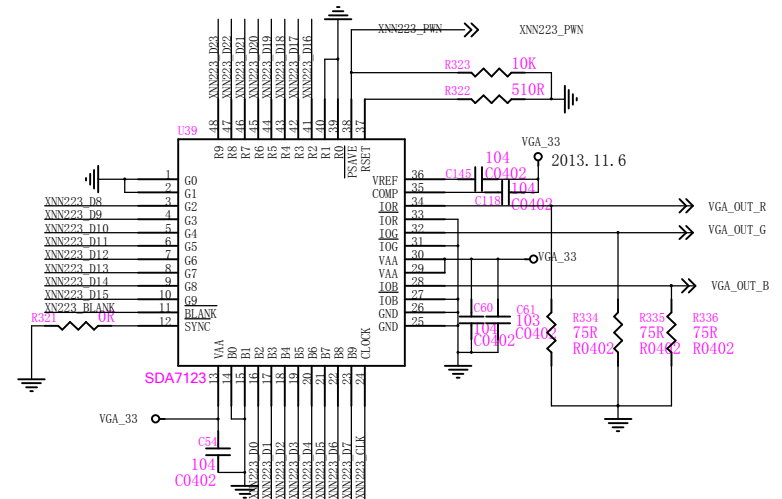
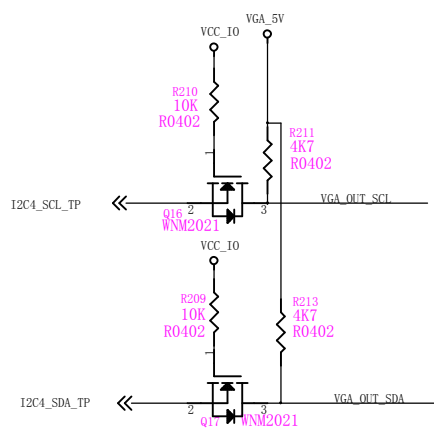
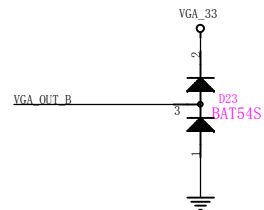
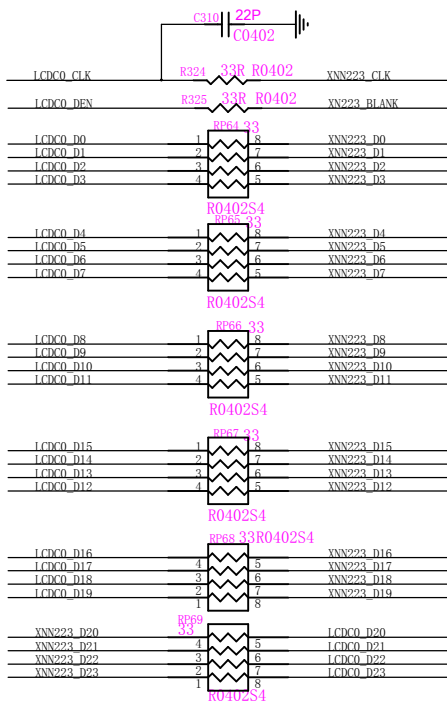
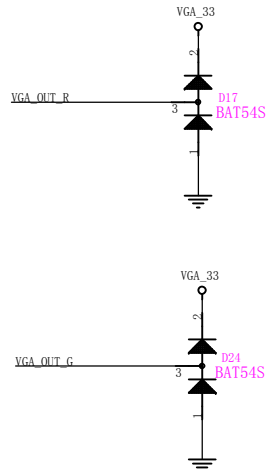
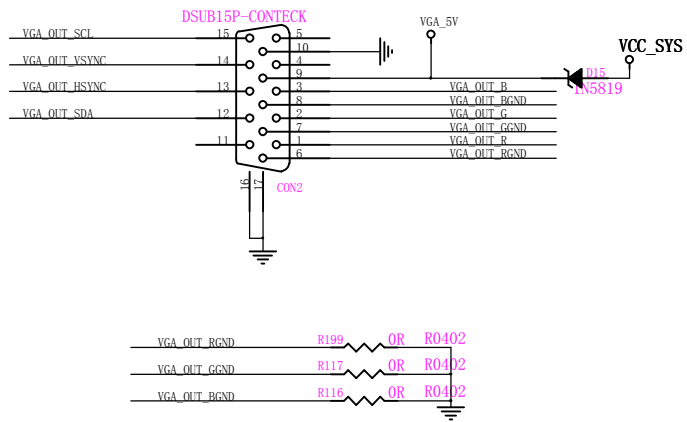


U-I-H
MCU_RK3288

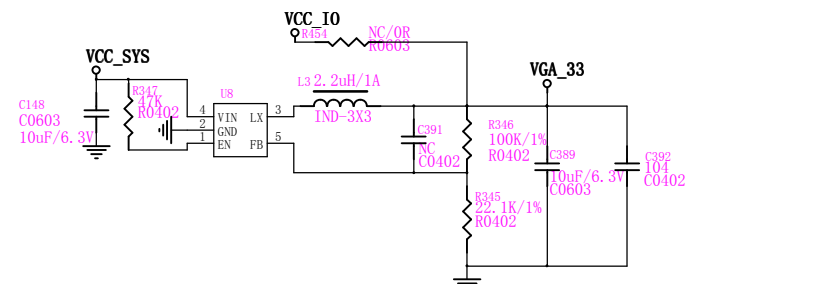
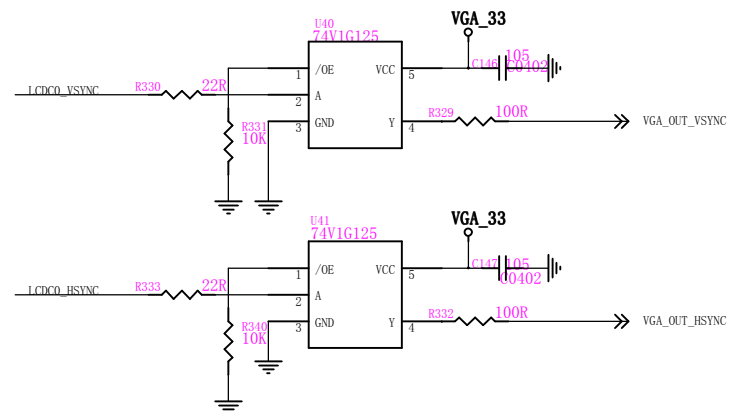


RK3288_H

UART0_RX	>>>UART0_RX	19
UART0_TX	>>>UART0_TX	19
UART0_CTS	>>>UART0_CTS	19
UART0_RTS	>>>UART0_RTS	19
SDIO0_D0	>>>SDIO0_D0	19
SDIO0_D1	>>>SDIO0_D1	19
SDIO0_D2	>>>SDIO0_D2	19
SDIO0_D3	>>>SDIO0_D3	19
SDIO0_CMD	>>>SDIO0_CMD	19
SDIO0_CLK	>>>SDIO0_CLK	19
BT_WAKE	>>>BT_WAKE	19
WIFI_REG_ON	>>>WIFI_REG_ON	19
BT_RST	>>>BT_RST	19
WIFI_HOST_WAKE	>>>WIFI_HOST_WAKE	19
BT_HOST_WAKE	>>>BT_HOST_WAKE	19



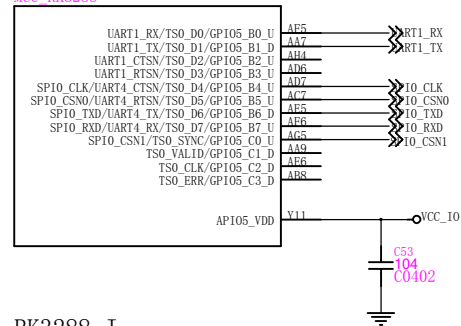
SDA7123



VGA_POWER

Firefly	
Title: VGA	
File:	REV:1.1
Create Date:	Page Num: 19
Modify Date: Wednesday, June 18, 2014	Page Total: 21

U1-J
MCU RK3288



RK3288_J

Firefly	
Title: DTV-(Reserve)	
File:	REV:1.1
Create Date:	Page Num: 21
Modify Date: Wednesday, June 18, 2014	Page total: 21